

MONTHLY MEMBERSHIP PROGRESS REPORT

LOCATION IOWA

District 9 EC

Results as of: 8/31/2021

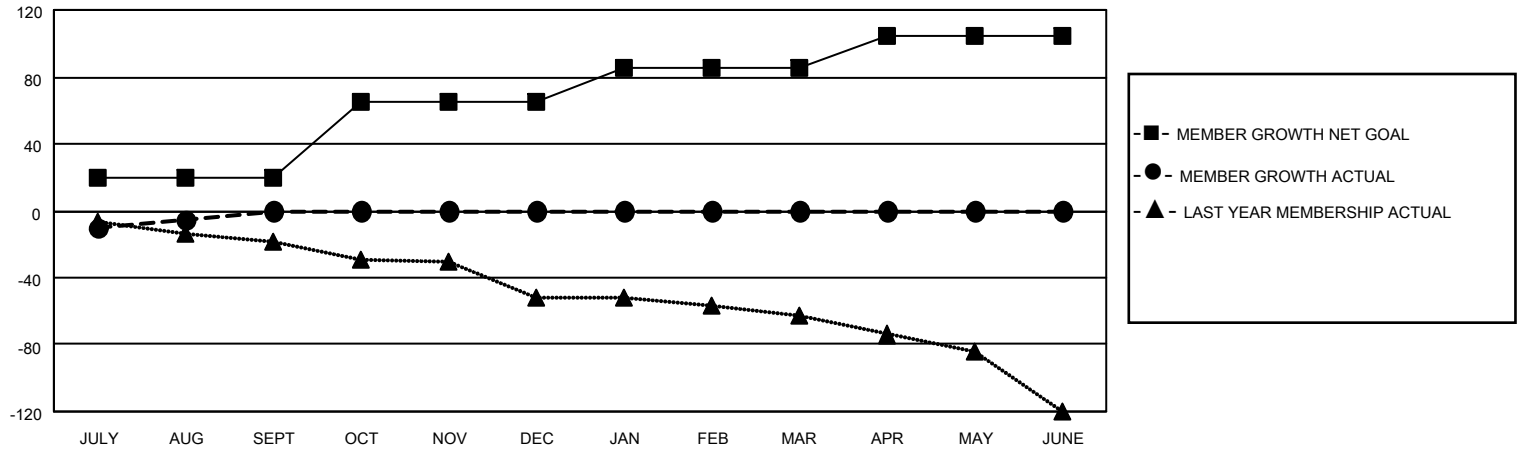
| Clubs | | | |
|-----------------------|---------------|-----------|---------------|
| RESULTS FOR 2021-2022 | | | |
| QUARTER | NEW CLUB GOAL | NEW CLUBS | DROPPED CLUBS |
| JULY/AUG/SEPT | 0 | 0 | 1 |
| OCT/NOV/DEC | 1 | 0 | 0 |
| JAN/FEB/MAR | 0 | 0 | 0 |
| APR/MAY/JUNE | 0 | 0 | 0 |

| Members | | | |
|-----------------------|------------------------|----------------------|-------------------------------------------------|
| RESULTS FOR 2021-2022 | | | |
| QUARTER | MEMBER GROWTH NET GOAL | MEMBER GROWTH ACTUAL | DROPPED MEMBERS ACTUAL (including transfers) |
| JULY/AUG/SEPT | 20 | 14 | 19 |
| OCT/NOV/DEC | 45 | 0 | 0 |
| JAN/FEB/MAR | 20 | 0 | 0 |
| APR/MAY/JUNE | 20 | 0 | 0 |

GOALS AND ACTUAL NEW CLUBS CUMULATIVE



GOALS AND ACTUAL MEMBERS CUMULATIVE



| | |
|------------------------|-----------|
| DROPPED CLUBS: 1 | |
| <u>DROPPED MEMBERS</u> | |
| DECEASED | 5 |
| CLUB CANCELLED | 0 |
| OTHER | 14 |
| TOTAL | 19 |

8 CLUBS OF 43 ADDED 1 OR MORE NEW MEMBERS

[CLICK HERE FOR CUMULATIVE MEMBERSHIP DATA](#)

| <u>GENDER DISTRIBUTION</u> | |
|----------------------------------------|--------------|
| MALE | 856 (70.80%) |
| FEMALE | 353 (29.20%) |
| NON BINARY | 0 (0.00%) |
| PREFER NOT TO ANSWER | 0 (0.00%) |
| TOTAL FAMILY UNIT MEMBERS | 304 |
| FAMILY MEMBERS PAYING HALF DUES | 156 |